



## **ADDENDUM TO BID DOCUMENTS**

**City of La Puente**

**LA PUENTE ACTIVITY CENTER**

**ADDENDUM NO. 05**

**Date: 3-12-26**

NOTE: ALL PLANS, SPECIFICATION AND CONTRACT DOCUMENTS REMAIN UNCHANGED EXCEPT SECTIONS OR PARTS ADDED TO, REVISED, DELETED OR CLARIFIED BY THIS ADDENDUM.

This Addendum consists of (2) 8 ½ x 11 pages and (8) 24" X 36" sheets.

\_\_\_\_\_  
Frisco White, AIA, Architect



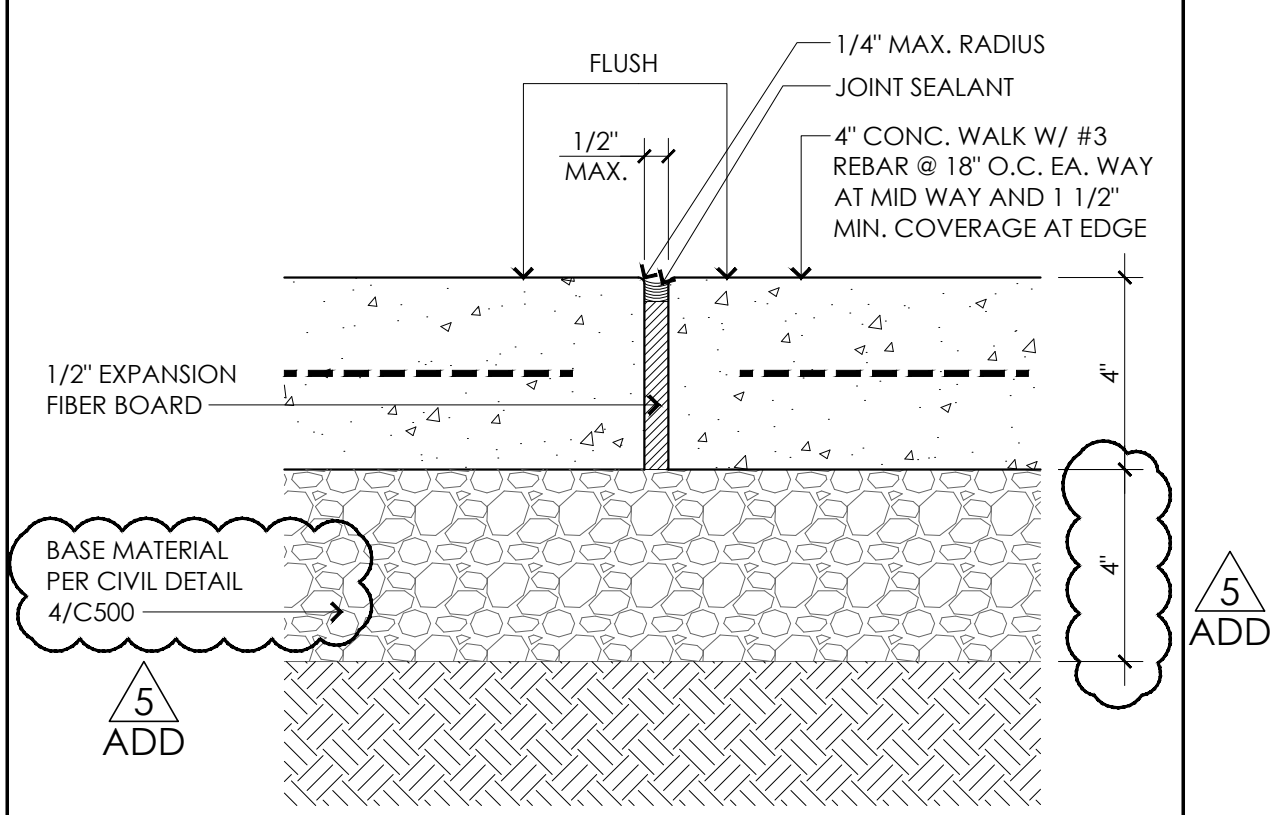
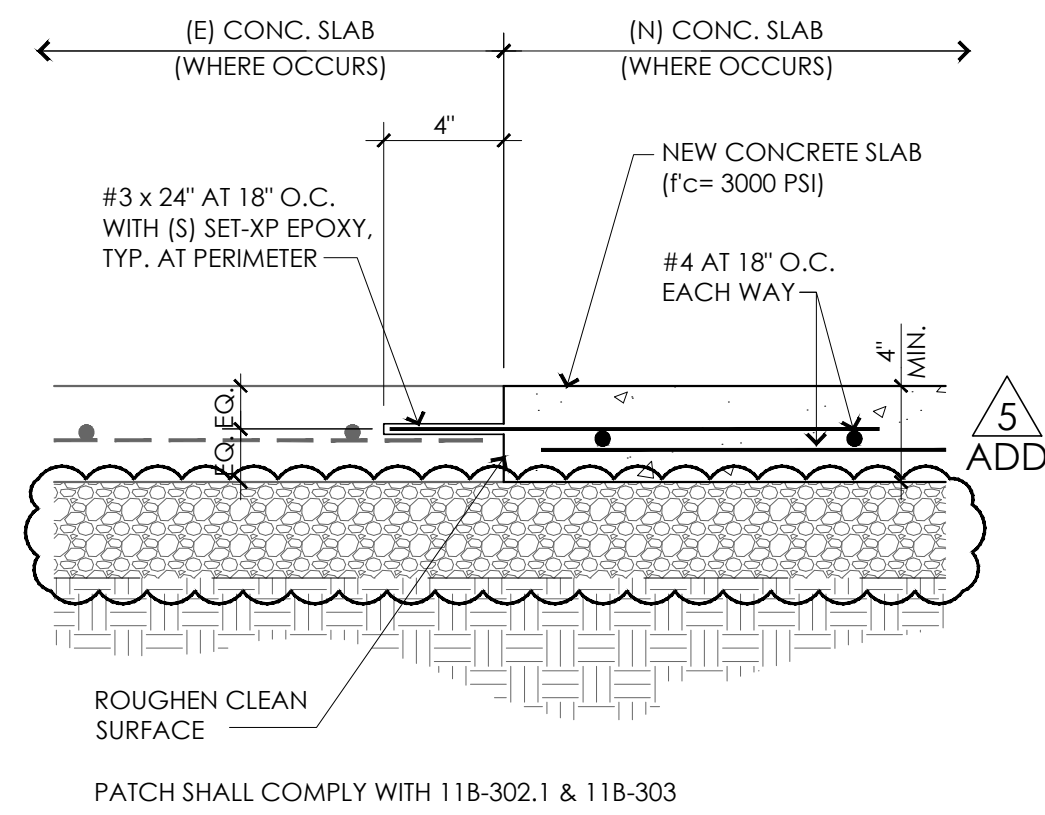
## **CHANGES TO DRAWINGS**

Item No.:

1. Sheet A005, MISCELLANEOUS DETAILS
  - a. Revise Detail 13 and 17 responding to RFIs as clouded per the attached sheet A005.
2. Sheet A101, FLOOR PLAN AND WALL TYPES
  - a. Add Curb Legend in Wall Types 16 and Room Finish Legend in Floor Plan 8 responding to RFIs as clouded per the attached sheet A101.
3. Sheet S3.0, FOUNDATION PLAN
  - a. Revise Foundation Plan responding to RFIs as clouded per the attached sheet S3.0.
4. Sheet P-1, PLUMBING LEGEND, SCHEDULES AND NOTES
  - a. Revise Plumbing Fixture Schedule, Plumbing Equipment Schedule responding to RFIs as clouded per the attached sheet P-1.

5. Sheet P-2, PLUMBING SITE PLAN
  - a. Revise Plumbing Site Plan responding to RFIs as clouded per the attached sheet P-2.
6. Sheet P-2A, PLUMBING FLOOR PLAN - WASTE AND VENT
  - a. Revise Plumbing Floor Plan - Waste and Vent responding to RFIs as clouded per the attached sheet P-2A.
7. Sheet P-2B, PLUMBING FLOOR PLAN - WATER
  - a. Revise Plumbing Floor Plan - Water responding to RFIs as clouded per the attached sheet P-2B.
8. Sheet P-4A, PLUMBING DETAILS
  - a. Revise Electric Water Heater Detail 3 responding to RFIs as clouded per the attached sheet P-4A.

**END OF ADDENDUM 05**



NEW CONC. WALK TO (E) 1 1/2"=1'-0"

$$1\ 1/2''=1'-0''$$

17

## CONCRETE PAVING

3"=1'-0"

13



1775 HANCOCK ST, SUITE 120  
SAN DIEGO, CA 92110  
619.542.1188 619.542.1663 FAX



CONSULTANT

City of La Puente

15900 E. MAIN ST. LA PUENTE, CA. 91744

## MISCELLANEOUS DETAILS

**La Puente  
ACTIVITY CENTER**

501 GLENDORA AVE. LA PUENTE, CA. 91744

PROJECT NO.: 22008

R.S.

A.P.

FILE NAME
-----------

DRAWN

[illegible]

CHECKED

## REVISIONS

SHEET NO.

5 03/13/2026

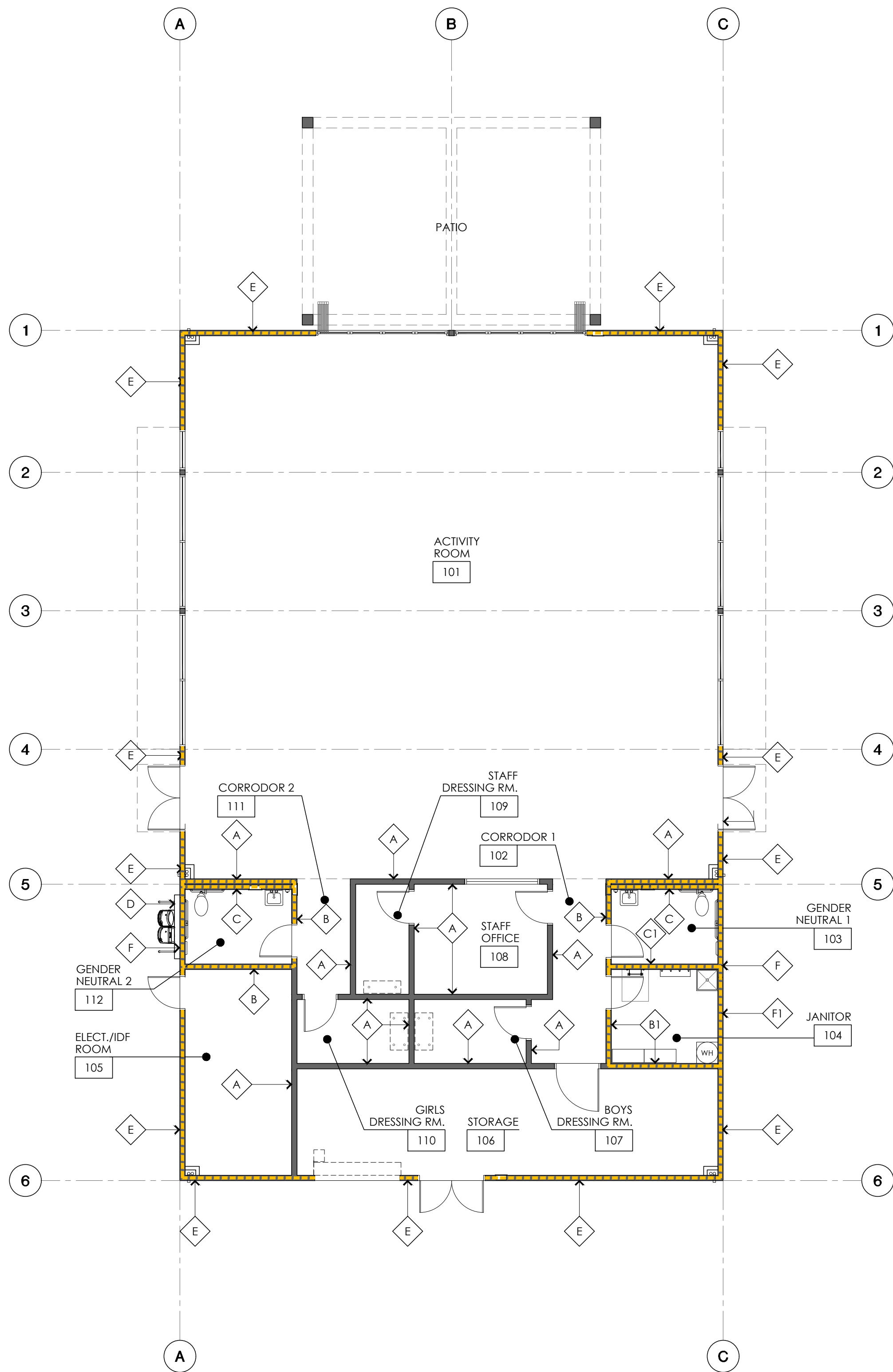
100

ADD

A005

OF SHEETS

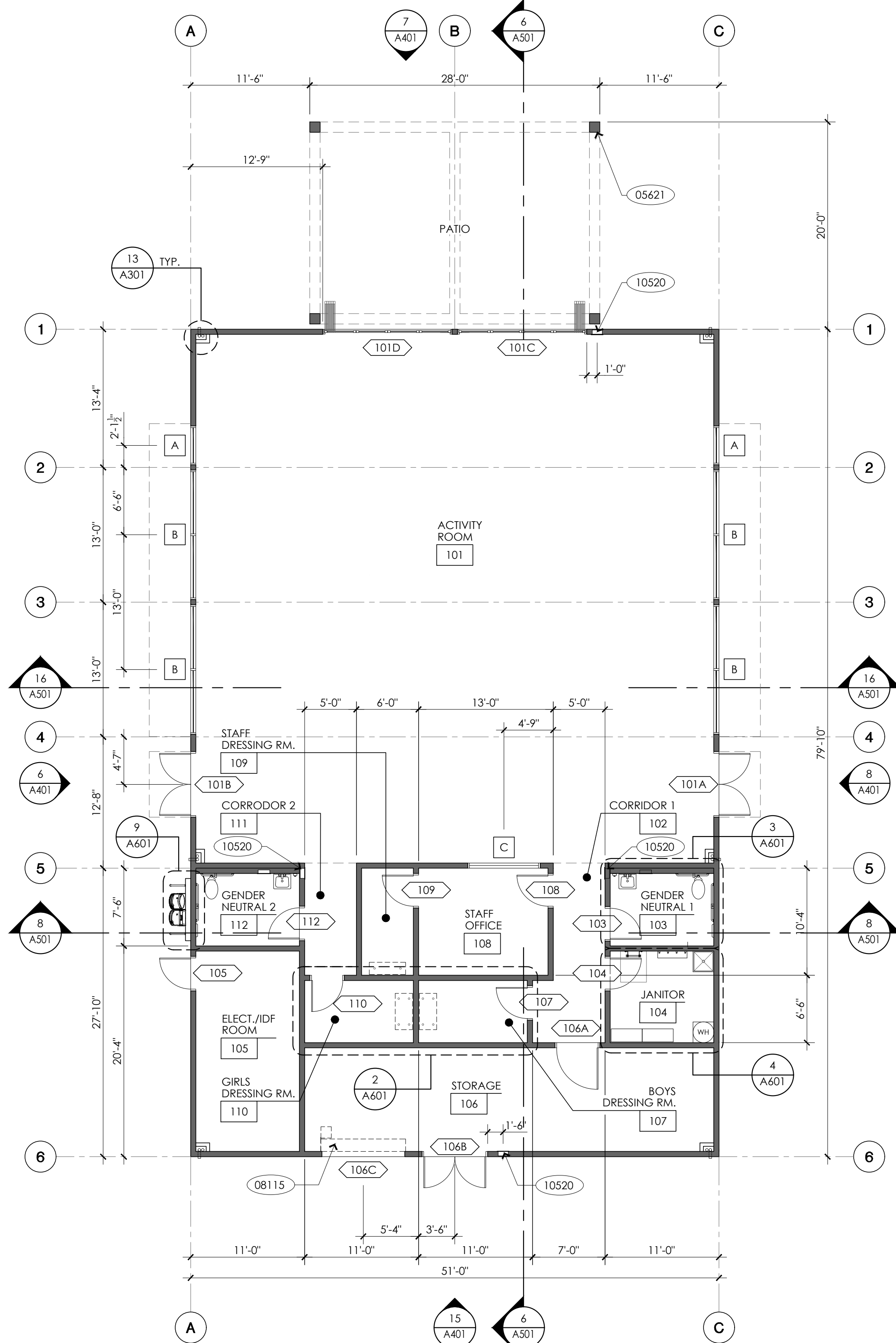
---



WALL TYPES PLAN

1/8" = 1'-0"

16



FLOOR & WALL BASE FINISH LEGEND	
MATERIAL/FINISH	ROOM
<b>POLISHED CONCRETE:</b> PER SPECIFICATIONS DIVISION 3, SECTION 03 35 43	• ACTIVITY ROOM #101 • CORRIDOR 1 #102 • CORRIDOR 2 #111
<b>WALL BASE:</b> TARKETT - (TRADITIONAL WALL BASE) 92 BLUE LAGOON COLOR	
<b>CARPET:</b> TARKETT - COLOR KNITE, MODERN PATINA 30201	• STAFF OFFICE #108 • STAFF DRESSING #109 • GIRLS DRESSING #110 • BOYS DRESSING #107
<b>WALL BASE:</b> TARKETT - (TRADITIONAL WALL BASE) 92 BLUE LAGOON COLOR	
<b>SEALED CONCRETE:</b> PER SPECIFICATIONS	• JANITOR #104 • ELECTRICAL/IDF #105 • STORAGE #106
<b>WALL BASE:</b> TARKETT - (TRADITIONAL WALL BASE) 92 BLUE LAGOON COLOR	
<b>CERAMIC TILE:</b> PER ADDENDUM 04	• GENDER NEUTRAL 1 #103 • GENDER NEUTRAL 2 #112

FLOOR PLAN

1/8" = 1'-0"

8

## KEY NOTES

- 05621 ALUMINUM MOTORIZED PERGOLA PER DETAIL 4/A201  
08115 ROLL-UP DOOR PER DETAILS 14 & 15/A201  
10520 RECESSED MOUNTED FIRE EXTINGUISHER CABINET AND FIRE EXTINGUISHER PER DETAIL 13/A810

## FIRE DEPARTMENT NOTES

- PORTABLE FIRE EXTINGUISHER SHALL BE INSTALLED AND MAINTAINED IN ALL OCCUPANCY GROUPS AND AT SUCH LOCATIONS AS REQUIRED BY GFC 906 AND CCR, TITLE 19, DIV. 1, CHAPTER 3. THE FINAL NUMBER AND LOCATION OF ALL EXTINGUISHERS SHALL BE DETERMINED BY THE LOCAL AREA FIRE INSPECTOR.
- CURTAIN, DRAPERIES, FABRIC HANGINGS AND SIMILAR COMBUSTIBLE DECORATIVE MATERIALS SUSPENDED FROM WALLS OR CEILINGS SHALL COMPLY WITH CFC 807 AND MEET THE FLAME PROPAGATION PERFORMANCE CRITERIA OF NFPA 701.
- EVERY ROOM OR SPACE WHICH IS USED FOR ASSEMBLY, CLASSROOM, DINING OR SIMILAR PURPOSES HAVING AN OCCUPANT LOAD OF THE ROOM OR SPACE POSTED IN A CONSPICUOUS PLACE, NEAR THE MAIN EXIT OR EXIT ACCESS DOORWAY FROM THE ROOM OR SPACE, FOR THE INTENDED CONFIGURATIONS. POSTED SIGNS SHALL BE MAINTAINED BY THE OWNER OR O.A.R. AGENT PER CBC 1004.9 & CFC 1004.9.

## GENERAL NOTES

- FOR TYPICAL SYMBOLS AND ABBREVIATIONS, SEE SHEET G001
- ALL ITEMS SHOWN OR NOTED ARE NEW, UNLESS INDICATED AS EXISTING.
- ALL EXTERIOR WALLS SHALL BE 6" METAL STUDS AT 16" O.C. WITH R-19 BATT INSULATION: MEMBRANE-FACED SURFACE WITH A FLAME-SPREAD INDEX OF 25 OR LESS & SMOKE DEVELOPED OF 50 OR LESS.
- ALL INTERIOR WALLS SHALL BE 6" METAL STUDS AT 16" O.C. (U.N.O.) WITH ONE LAYER OF GYPSUM BOARD EACH SIDE INSTALLED FULL-HEIGHT TO THE ROOF STRUCTURE. (REFER TO DETAIL 2/A830).
- FOR TYPICAL STUD WALL FRAMING AND CONNECTIONS TO STRUCTURE, SEE A830.
- ALL GYPSUM BOARD SHALL BE 5/8" THICK TYPE "X", UNO.
- SEE SHEET A830 & STRUCTURAL DRAWINGS FOR WALL CONCRETE CURB ADDITIONAL INFORMATION.
- PROVIDE SOLID BACKING PER 3/A810 INSIDE NEW WALLS AS REQUIRED FOR THE SUPPORT OF LIGHT FIXTURES, AND MISC. ELEC., MECH. & PLUMBING FIXTURES AND EQUIPMENT AS OCCURS. WHERE ANCHORAGE DETAILS ARE NOT SHOWN ON THE DRAWINGS OR IN THE SMACNA GUIDELINES, INSTALLATION SHALL BE SUBJECT TO APPROVAL OF THE OWNER.
- SIGNAGE TYPES ARE INDICATED BY SYMBOL REFER TO SIGNAGE LEGEND, SHEET A010. FOR ADDITIONAL SIGNAGE SEE DOOR SCHEDULE, REMARKS.
- FOR ADDITIONAL ROOM FINISH INFORMATION SEE FINISH SCHEDULE.
- DOOR TYPES ARE INDICATED BY SYMBOL REFER TO DOOR SCHEDULE, SHEET A701.
- WINDOW TYPES ARE INDICATED BY SYMBOL REFER TO WINDOW TYPES, SHEET A701.
- AREAS WITH FLOOR DRAIN SHALL HAVE 2% MAX. SLOPE IN ALL DIRECTIONS & 1/4" MAX. GRATE OPENING - TYPICAL.

## WALL TYPES

- A** NON-RATED INTERIOR WALL:  
6" METAL STUDS AT 16" O.C. W/ 5/8" TYPE "X" GYP. BD. ON FINISH SIDE, ATTACH TO CURB OR SLAB & STRUCTURE PER DETAIL 1/A830. MAX HEIGHT: 20'-0"
- B** NON-RATED INTERIOR WALL:  
6" METAL STUDS AT 16" O.C. W/ THIN-SET CER. TILE OVER 5/8" CEMENT. BD. UP TO 6'-0" & 5/8" TYPE "X" W.R. GYP. BD. FROM 6'-0" TO CEILING ON RESTROOM FINISH SIDE AND 5/8" TYPE "X" GYP. BD. ON OPPOSITE SIDE. ATTACH TO CURB & STRUCTURE PER DETAIL 1/A830. MAX HEIGHT: 20'-0"
- B1** NON-RATED INTERIOR WALL:  
6" METAL STUDS AT 16" O.C. W/ 5/8" TYPE "X" W.R. GYP. BD. W/ FIBERGLASS REINFORCED PANEL (UP TO 6'-0") ON JANITOR SIDE AND 5/8" TYPE "X" GYP. BD. ON OPPOSITE SIDE. ATTACH TO CURB & STRUCTURE PER DETAIL 1/A830. MAX HEIGHT: 20'-0"
- C** NON-RATED INTERIOR WALL:  
6" METAL STUDS AT 16" O.C. W/ THIN-SET CER. TILE OVER 5/8" CEMENT. BD. UP TO 6'-0" & 5/8" TYPE "X" W.R. GYP. BD. FROM 6'-0" TO CEILING ON FINISH SIDE. ATTACH TO CURB & STRUCTURE PER DETAIL 1/A830. MAX HEIGHT: 20'-0"
- C1** NON-RATED INTERIOR WALL:  
6" METAL STUDS AT 16" O.C. W/ THIN-SET CER. TILE OVER 5/8" CEMENT. BD. UP TO 6'-0" & 5/8" TYPE "X" W.R. GYP. BD. FROM 6'-0" TO CEILING ON RESTROOM SIDE AND 5/8" TYPE "X" W.R. GYP. BD. W/ FIBERGLASS REINFORCED PANEL (UP TO 6'-0") ON JANITOR SIDE. ATTACH TO CURB & STRUCTURE PER DETAIL 1/A830. MAX HEIGHT: 20'-0"
- D** NON-RATED INTERIOR WALL:  
6" METAL STUDS AT 16" O.C. W/ THIN-SET CER. TILE OVER 5/8" CEMENT. BD. OVER UP TO 6'-0" & PLASTER OVER METAL LATH OVER WATERPROOF MEMBRANE OVER THERMAX WALL SYSTEM EXTERIOR INSULATION FROM 6'-0" TO TOP OF WALL. ATTACH TO CURB & STRUCTURE PER DETAIL 1/A830. MAX HEIGHT: 20'-0"
- E** NON-RATED EXTERIOR WALL:  
6" METAL, 16 GAUGE STUDS AT 16" O.C. W/ 5/8" TYPE "X" GYP. BD. INSIDE & PLASTER OVER METAL LATH OVER WATERPROOF MEMBRANE OVER THERMAX WALL SYSTEM EXTERIOR INSUL. OUTSIDE. ATTACH TO CURB & STRUCTURE PER DETAIL 1/A830. MAX HEIGHT: 20'-0"
- F** NON-RATED EXTERIOR WALL:  
6" METAL, 16 GAUGE STUDS AT 16" O.C. W/ THIN-SET CER. TILE OVER 5/8" CEMENT BD. UP TO 6'-0" & 5/8" TYPE "X" WATER RESISTANT GYP. BD. FROM 6'-0" TO CEILING INSIDE AND PLASTER OVER METAL LATH OVER WATERPROOF MEMBRANE OVER THERMAX WALL SYSTEM EXTERIOR INSULATION OUTSIDE. ATTACH TO CURB & STRUCTURE PER DETAIL 1/A830. MAX HEIGHT: 20'-0"
- F1** NON-RATED EXTERIOR WALL:  
6" METAL, 16 GAUGE STUDS AT 16" O.C. W/ 5/8" TYPE "X" WATER RESISTANT GYP. BD. W/ FIBERGLASS REINFORCED PANEL (UP TO 6'-0") INSIDE AND PLASTER OVER METAL LATH OVER WATERPROOF MEMBRANE OVER THERMAX WALL SYSTEM EXTERIOR INSULATION OUTSIDE. ATTACH TO CURB & STRUCTURE PER DETAIL 1/A830. MAX HEIGHT: 20'-0"

ARCHITECT

**westbergwhite**  
architecture  
1775 HANCOCK ST, SUITE 120  
SAN DIEGO, CA 92110  
619.542.1188 619.542.1663 FAX



CONSULTANT

City of La Puente

15900 E. MAIN ST. LA PUENTE, CA. 91744

FLOOR PLAN  
AND WALL TYPES PLAN

**La Puente**  
**ACTIVITY CENTER**

501 GLENDORA AVE. LA PUENTE, CA. 91744

PROJECT NO.: 22008

R.S.

A.P.

FILE NAME

DATE: 12/05/2025

DRAWN

CHECKED

REVISIONS

ADD 03/13/2026

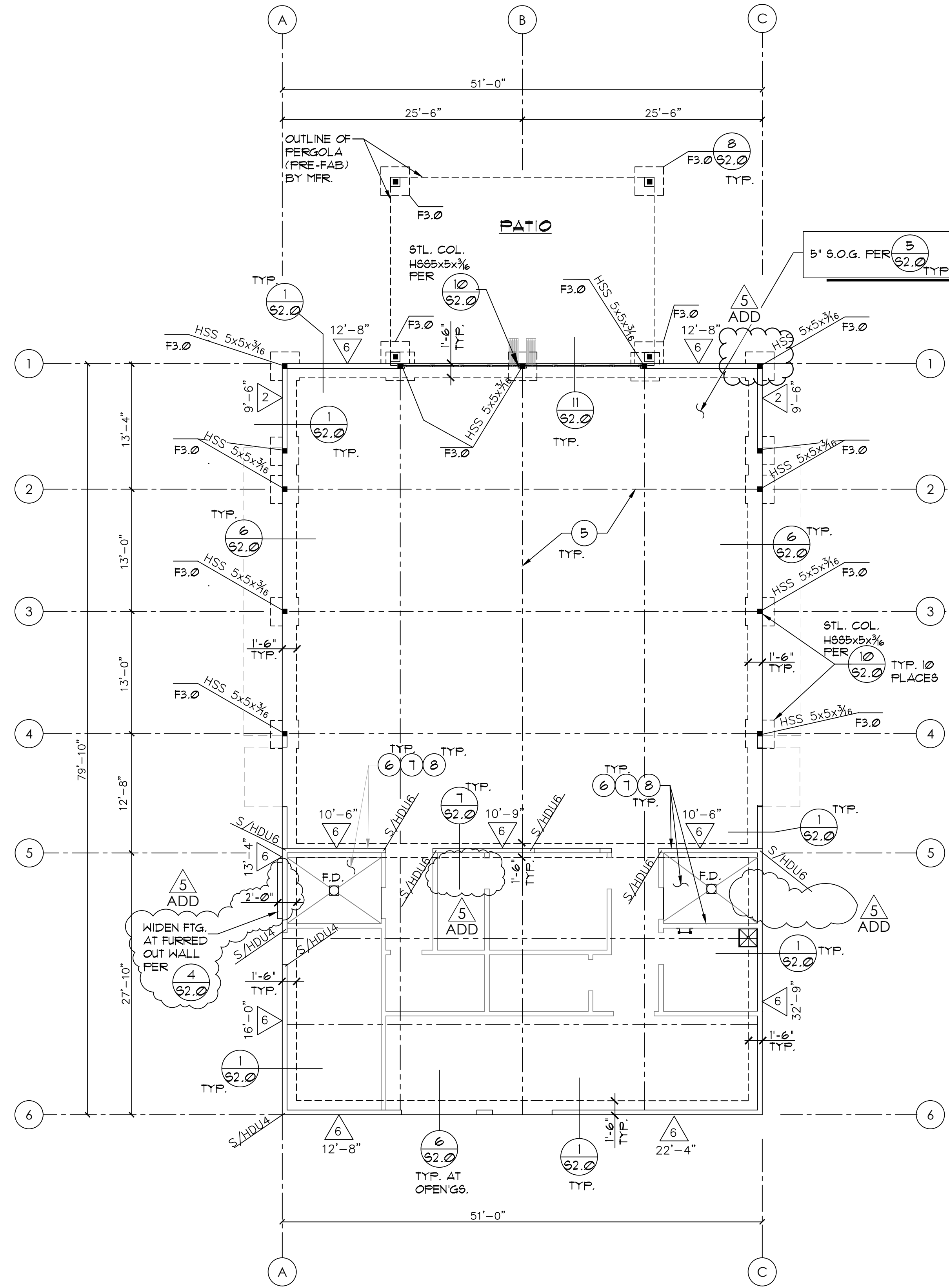
SHEET NO.

A101

OF SHEETS

ADDENDUM\_05





FOUNDATION PLAN  
1/8" = 1'-0"

REF. NORTH  
NORTH

FOUNDATION LEGENDS:

- ALL EXTERIOR & INTERIOR BEARING WALLS SHALL BE 600 S162-54 (16 GA.) MTL. STUDS @ 16" O.C. FOR WALLS UP TO 16'-0" HIGH, OTHERWISE USE 600 S250-68 (14 GA.) STUDS @ 16" O.C. TYP. UNO.
- INDICATES INTERIOR NON-BEARING WALLS. SEE ARCH'L. DRAWINGS
- INDICATES SHEAR WALL PANEL MARK FROM THIS LEVEL TO LEVEL ABOVE PER SHEAR WALL SCHEDULE ON PROVIDE NON-SHEAR PLYWOOD ADJACENT TO SHEAR PANELS IN ORDER TO PROVIDE A FLUSH FINISH.
- INDICATES SHEAR WALL PANEL APPROX. MIN. LENGTH IF NOT SHOWN, THEN PROVIDE PLYWOOD ON ENTIRE FACE.
- HOLDOWN ANCHOR PER S1.3
- INDICATES STEEL COL. PER PLAN PER S1.1
- INDICATES CONC. SPREAD FOOTINGS
- INDICATES STEP IN CONC. PER S1.1
- SEE "NOTES" THIS SHEET
- INDICATES STEP IN SURFACES

FOUNDATION NOTES:

- ALL EXTERIOR WALL FACES IN LINE WITH DESIGNATED SHEAR WALL PANELS SHALL HAVE SAME THICKNESS PLYWOOD (CD OR BETTER) OVER ENTIRE AREA.
- FOR ADDITIONAL DIMENSIONS & LOCATIONS OF WALL OPENINGS COORD. WITH ARCHITECTURAL PLANS
- SEE SHEETS S1.0, S1.1, S1.2, S1.3 & S1.4 FOR ALL TYP. DETAILS
- SLAB JOINT PER S1.1
- FOR WALL'S OPENING FRAMING SEE DETAIL S1.4
- 6" HIGH CONCRETE CURB PER TYP. S1.2 REFER TO ARCH'L. FOR CURB'S LOCATIONS.
- SLOPE SLAB TO DRAIN
- DEPRESS SLAB 2" FOR TILE. SEE S1.1

8 6 4 2 0 8  
ø" = 1'-0"

IF DRAWING IS NOT 24"x36" IT HAS BEEN REDUCED. REDUCE SCALE ACCORDINGLY.

GRAPHIC SCALE

MOBAYED CONSULTING GROUP

7940 SILVERTON AVENUE, STE. 201 • SAN DIEGO, CALIFORNIA 92126  
TEL : (650)866-7855 FAX : (650)866-7845

ARCHITECT

1775 HANCOCK ST, SUITE 120  
SAN DIEGO, CA 92110  
619.542.1188 619.542.1663 FAX

CONSULTANT

City of La Puente

15900 E. MAIN ST. LA PUENTE, CA. 91744

FOUNDATION PLAN

La Puente  
ACTIVITY CENTER

501 GLENDORA AVE. LA PUENTE, CA. 91744

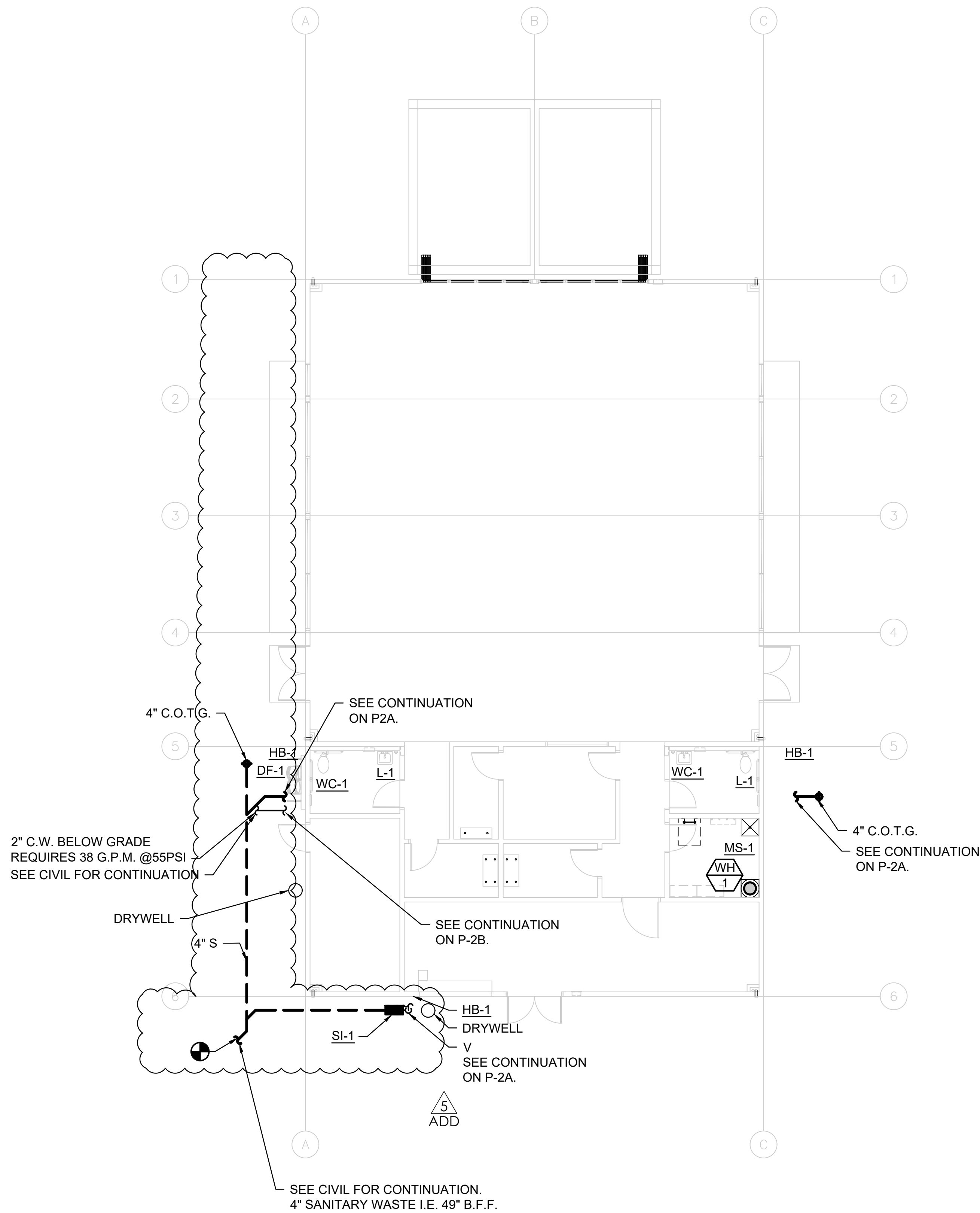
PROJECT NO.: 22008  
R.S. A.P.  
FILE NAME  
DATE: 10/16/2025 DRAWN SM  
CHECKED OM  
REVISIONS  
ADD 03/13/2026  
SHEET NO. S3.0  
MCG# 23007 B OF SHEETS

ADDENDUM 05









PLUMBING SITE PLAN

SCALE: 1/8" = 1'-0"



ALM. CONSULTING ENGINEERS, INC.

COMMERCIAL • RESIDENTIAL • INSTITUTIONAL  
• H.V.A.C. Design • Title 24 Compliance  
• Plumbing Design • Energy Analysis

8330 Juniper Creek Lane  
San Diego, CA 92126  
Tel: (858) 792-1700

A.L.M. PROJECT NO. 22013

SDG

ARCHITECT

**westbergwhite**  
architecture  
1775 HANCOCK ST, SUITE 120  
SAN DIEGO, CA 92110  
619.542.1188 619.542.1663 FAX



CONSULTANT



City of La Puente

15900 E. MAIN ST. LA PUENTE, CA. 91744

PLUMBING SITE PLAN

**La Puente  
ACTIVITY CENTER**

501 GLENDORA AVE. LA PUENTE, CA. 91744

PROJECT NO.: 22008

R.S.

A.P.

FILE NAME

DATE: 03/11/2026

DRAWN

CHECKED

REVISIONS

ADD 03/13/2026

SHEET NO.

P-2

OF SHEETS

ADDENDUM\_05



**A.L.M. CONSULTING ENGINEERS, INC.**  
**COMMERCIAL • RESIDENTIAL • INSTITUTIONAL**  
 • H.V.A.C. Design • Title 24 Compliance  
 • Plumbing Design • Energy Analysis  
 8330 Juniper Creek Lane  
 San Diego, CA 92126  
 Tel: (858) 792-1700  
 A.L.M. PROJECT NO. 22013

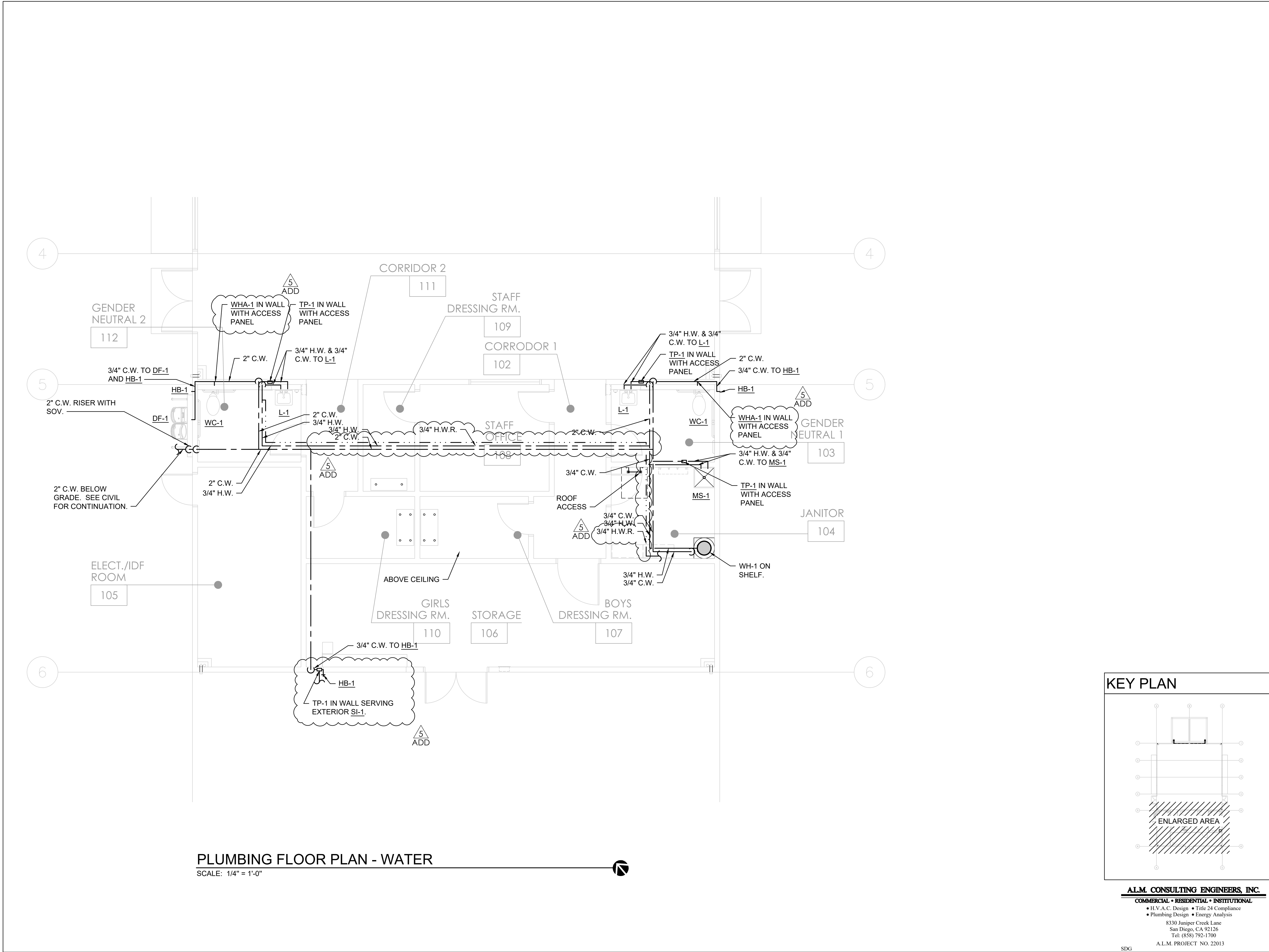
501 GLENDORA AVE. LA PUENTE, CA. 91744

SHEET NO. P-5 OF 5

OF SHEETS

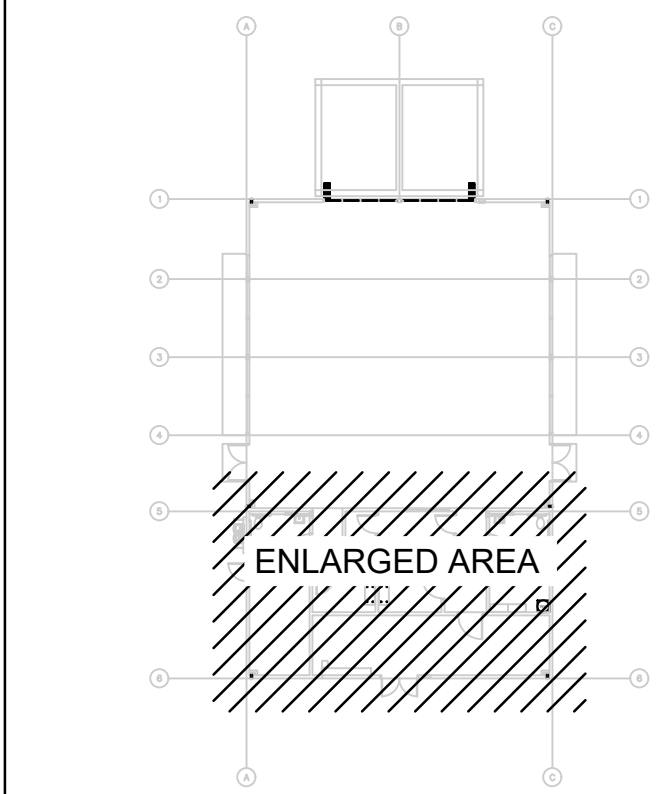
## ADDENDUM 05





PLUMBING FLOOR PLAN - WATER  
SCALE: 1/4" = 1'-0"

KEY PLAN



**AL.M. CONSULTING ENGINEERS, INC.**  
COMMERCIAL • RESIDENTIAL • INSTITUTIONAL  
• H.V.A.C. Design • Title 24 Compliance  
• Plumbing Design • Energy Analysis  
8330 Juniper Creek Lane  
San Diego, CA 92126  
Tel: (858) 792-1700  
A.L.M. PROJECT NO. 22013

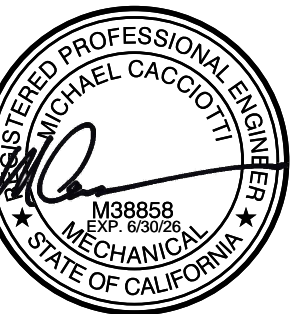
SDG

ARCHITECT

**westbergwhite**  
architecture  
1775 HANCOCK ST, SUITE 120  
SAN DIEGO, CA 92110  
619.542.1188 619.542.1663 FAX



CONSULTANT



City of La Puente

15900 E. MAIN ST. LA PUENTE, CA. 91744

PLUMBING FLOOR PLAN - WATER

**La Puente  
ACTIVITY CENTER**

501 GLENDORA AVE. LA PUENTE, CA. 91744

PROJECT NO.: 22008  
R.S. A.P.

FILE NAME  
DATE: 03/11/2026

DRAWN  
CHECKED

REVISIONS  
ADD 03/13/2026

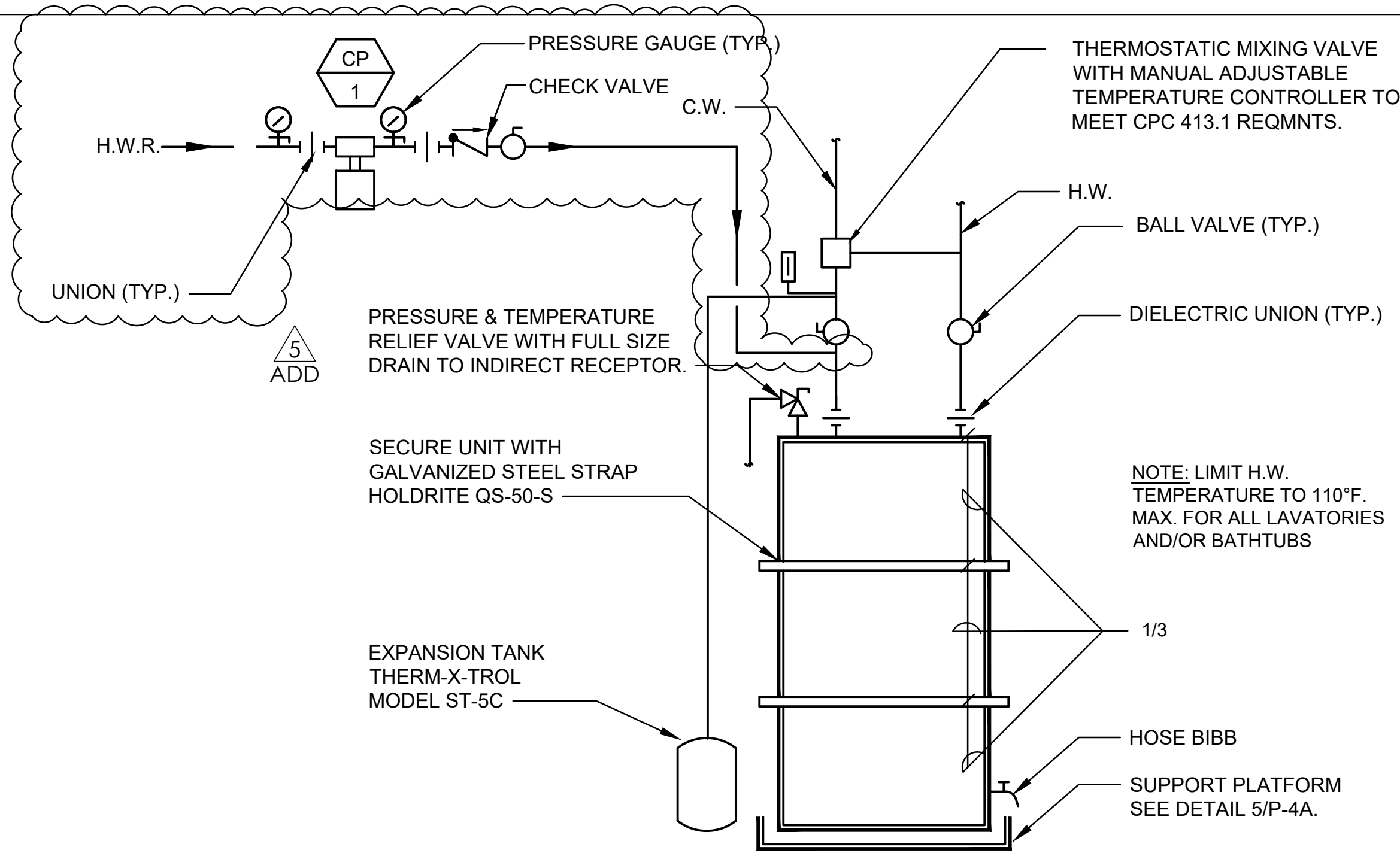
SHEET NO.

P-2B

OF SHEETS

ADDENDUM\_05





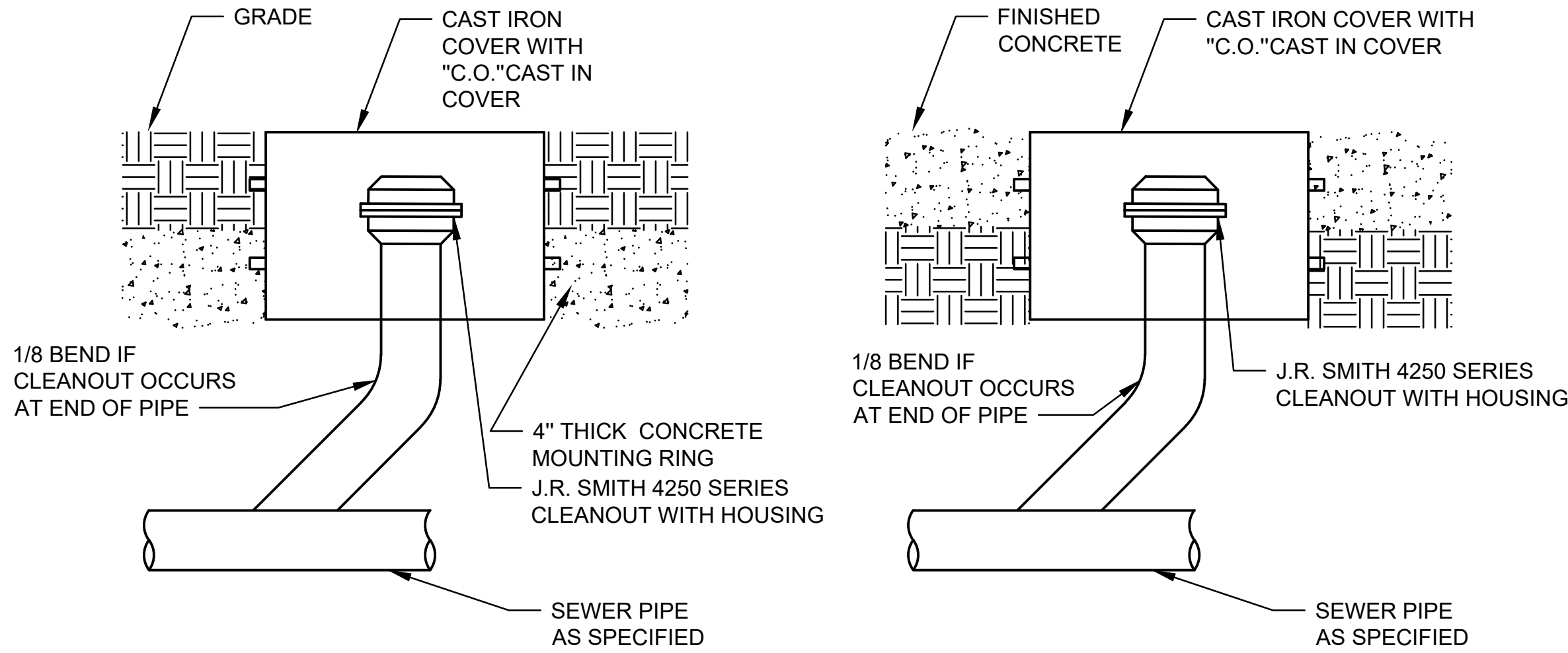
NOTE:  
WATER HEATER SHALL BE ANCHORED OR STRAPPED TO RESIST  
HORIZONTAL DISPLACEMENT TO MEET LOCAL CODE REQUIREMENTS.  
SEE DETAIL 4/P-4A.

### ELECTRIC WATER HEATER DETAIL

NOT TO SCALE

PD6009

3

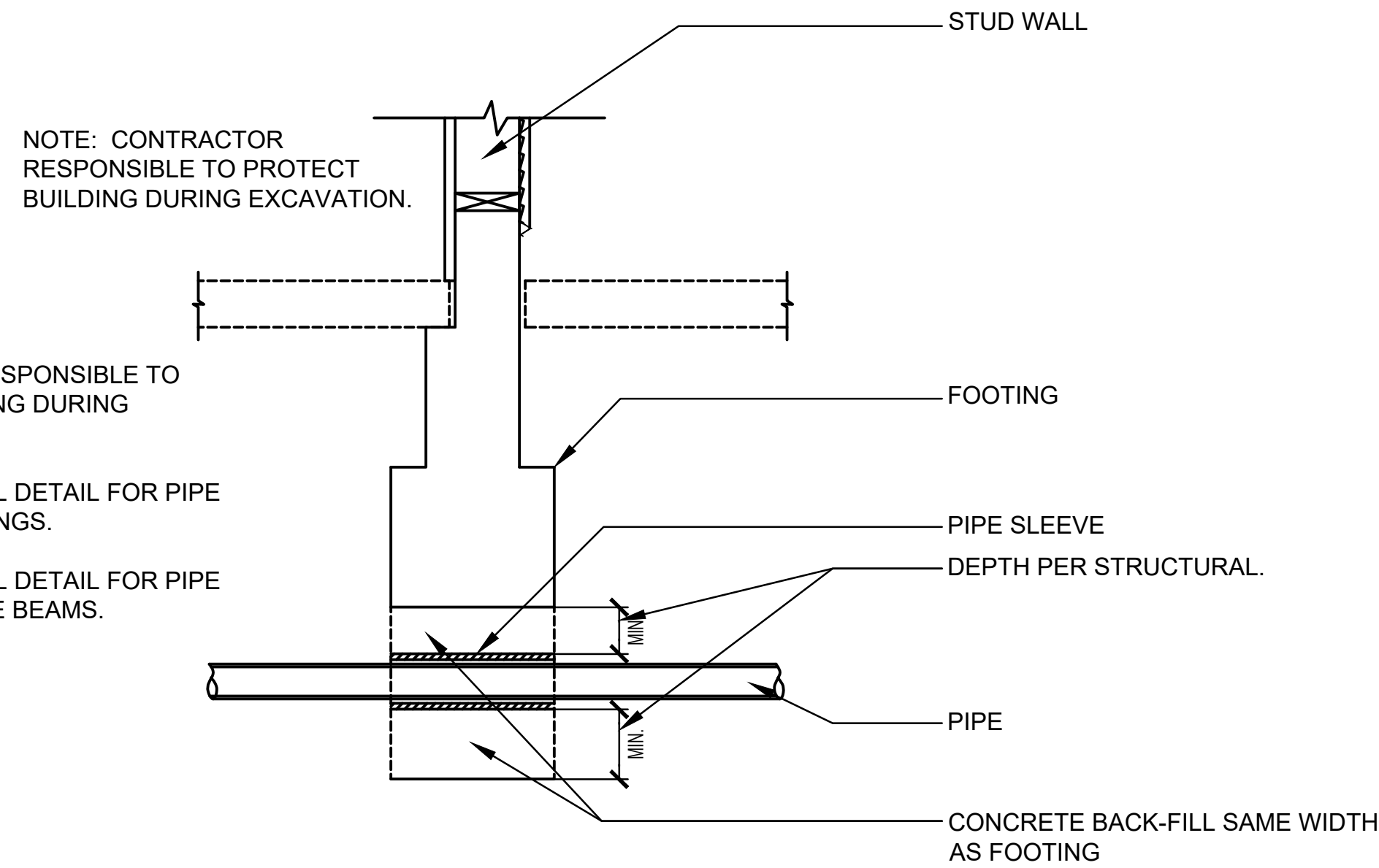


### CLEANOUT OUTSIDE OF BUILDING DETAIL

NOT TO SCALE

PD6041

1



- NOTE:
1. CONTRACTOR RESPONSIBLE TO PROTECT BUILDING DURING EXCAVATION.
  2. SEE STRUCTURAL DETAIL FOR PIPE THROUGH FOOTINGS.
  3. SEE STRUCTURAL DETAIL FOR PIPE THROUGH GRADE BEAMS.

### PIPE THROUGH FOOTING

NOT TO SCALE

2

Date/Rev: 10-02-23 / Rev G / Sht 1 of 1

Product Submittal	
Name	
Date	
Architect/Owner	
Contractor	
Tag	
Notes	

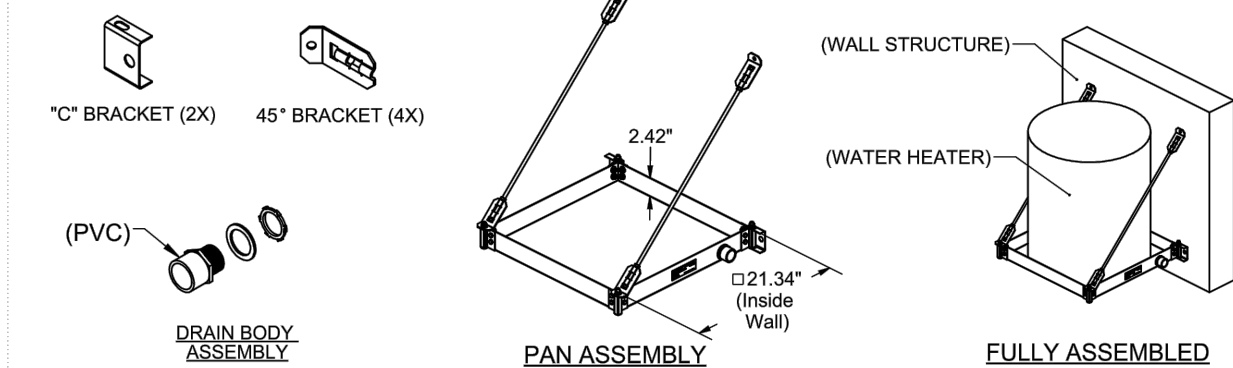


#### HoldRite QUICK STAND™ #40-SWHP-W Wall Mounted Equipment Platform Product Specification Drawing

The #40-SWHP-W Wall Mounted Equipment Platform is engineered to support water heaters up to 20 U.S. gallons (or other equipment up to 375 pounds total weight) mounted to a wall. This item also serves as a drain pan. See Installation Instructions for detail.

##### Product Information:

- Material:
  - Pan: 14 gage CRS, galvanized
  - Corner Brackets (4): 14 gage CRS, galvanized
  - C-Brackets (2): 16 gage CRS, galvanized
  - 45° Brackets (4): 12 gage, CRS, galvanized
  - Threaded Rod (2): Low carbon steel, zinc plated, 3/8" x 29-3/4" long
- Wide platform allows water heaters up to 21-1/4" diameter
- Watertight corners and drain fittings eliminate need for additional drain pan
- Static load rating 375 pounds with 2X safety factor (depending on structural anchorage)
- Professional Engineer reviewed documentation available
- Includes PVC drain body 1" MIPT x 1" FS
- Galvanized steel construction
- Suspends with user supplied 3/8" hardware to mount to wall, 4 places
- Installation instructions for mounting to concrete or framed wall structure available



US Contact: 1.877.700.4242 • sales@holdrite.com • holdrite.com  
Canadian Contact: 1.888.820.0120 • canadasaless@rwc.com • holdrite.com



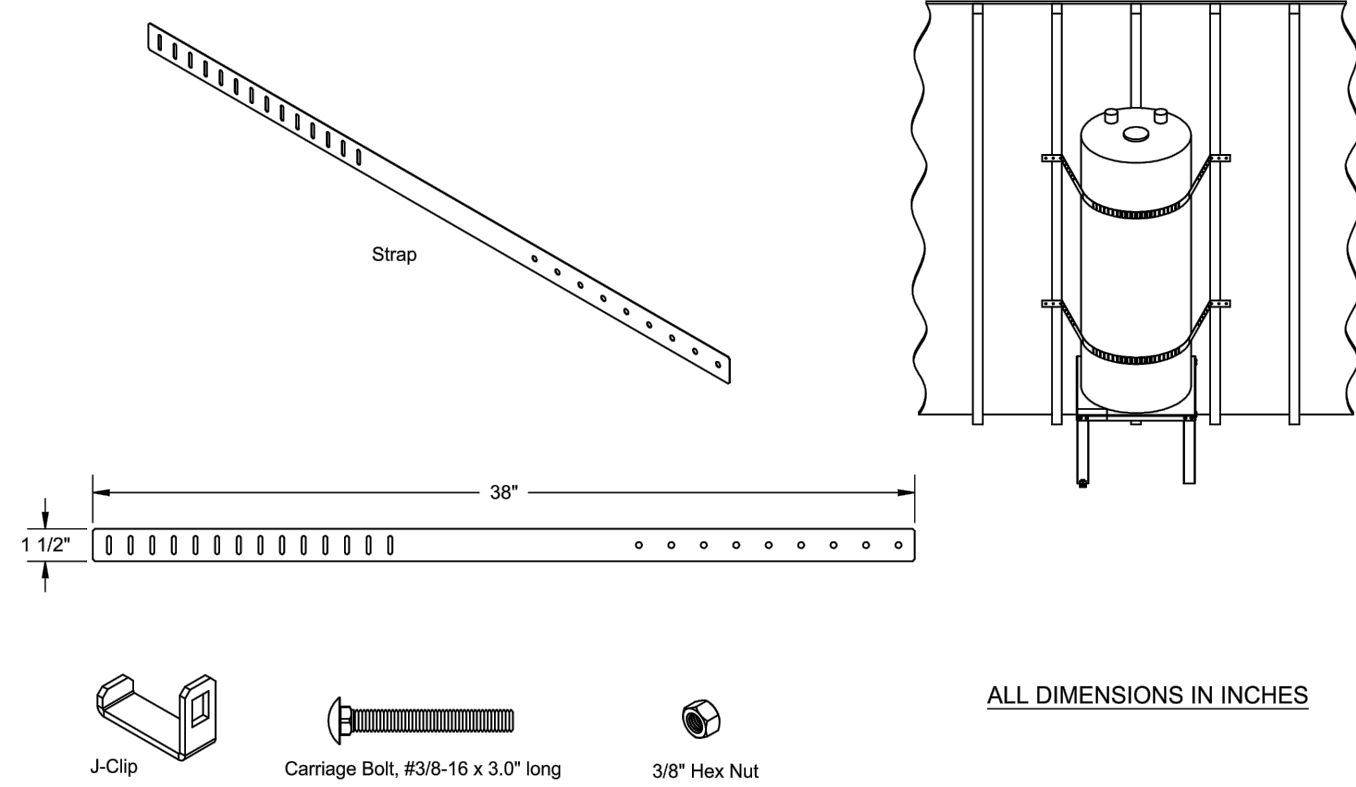
NOTE:  
WALL ATTACHMENT PER STRUCTURAL.

### WATER HEATER SUPPORT DETAIL

NOT TO SCALE

5

#### PRODUCT SPECIFICATION DRAWING QUICK STRAP® #QS-50 Seismic support for water heaters



The QUICK STRAP® #QS-50 is a seismic/earthquake support system for water heaters up to 80 U.S. gallons in size. The system includes: (4) Straps, (2) J-Clips, (2) 3/8" Carriage Bolts and (2) 3/8" Hex Nuts. The Quick Link® system allows for full adjustment from the front side of the water heater.

##### Product Information:

- Material: Strap, 24 gage CRS, galvanized
- California Division State Architect (DSA) approval #97-010
- UPC / IPC / IAPMO listed



Product Submittal	
Job Name:	
Date:	
Part Number:	Qty:
Architect / Owner:	
Contractor:	
Notes:	



NOTE:  
WALL ATTACHMENT PER STRUCTURAL.

### WATER HEATER SEISMIC STRAP DETAIL

NOT TO SCALE

4

#### ALM. CONSULTING ENGINEERS, INC.

COMMERCIAL • RESIDENTIAL • INSTITUTIONAL

- H.V.A.C. Design • Title 24 Compliance
- Plumbing Design • Energy Analysis

8330 Juniper Creek Lane  
San Diego, CA 92126  
Tel: (858) 792-1700

A.L.M. PROJECT NO. 22013

SDG

ARCHITECT

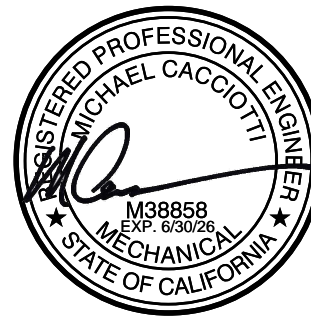


westbergwhite  
architecture

1775 HANCOCK ST. SUITE 120  
SAN DIEGO, CA 92110  
619.542.1188 619.542.1663 FAX



CONSULTANT



City of La Puente

15900 E. MAIN ST. LA PUENTE, CA. 91744

PLUMBING DETAILS

La Puente  
ACTIVITY CENTER

501 GLENDORA AVE. LA PUENTE, CA. 91744

PROJECT NO.: 22008

R.S.

A.P.

FILE NAME

DATE: 03/11/2026

DRAWN

CHECKED

REVISIONS

ADD 03/13/2026

SHEET NO.

P-4A

OF SHEETS

ADDENDUM\_05